

# **LVRLAC**

**ANNUAL REPORT FOR FY: 2018/2019**

---

**LAKE VICTORIA REGION LOCAL  
AUTHORITIES COOPERATION**

---



# CONTENTS

---

Acronyms. ....	iii
Tentative program for LVRLAC AGA 2019 at Kisumu city - Kenya. ....	vi
Overview of LVRLAC Annual General Assembly .....	2
Message from the regional chairperson .....	3
Welcome message from the speaker Kisumu County Assembly.....	6
Message from the Chapter chairperson – Kenya .....	6
Message from the chapter chairperson - Tanzania.....	7
LVRLAC establishment and structure.....	8
LVRLAC Regional Executive Committee.....	16
Secretary General Report.....	19
List of LVRLAC member Local Authority Uganda chapter.....	23
List of LVRLAC member Local Authority Tazania chapter.....	26
List of LVRLAC member Local Authority Kenya chapter.....	27
Photos’ of LVRLAC member Local Authority in Uganda.....	28



## LIST OF ACRONYMS

---

<b>AGA</b>	Annual General Assembly
<b>EXCOM</b>	Executive Committee.
<b>CPT</b>	Core Planning Team
<b>EAC</b>	East African Community
<b>LA</b>	Local Authority
<b>LVBC</b>	Lake Victoria Basin Commission
<b>LVCUW</b>	Lake Victoria clean up week
<b>LVR</b>	Lake Victoria Region
<b>LVRLAC</b>	Lake Victoria Region Local Authorities Cooperation
<b>LWN</b>	Lake Victoria Network
<b>SUITS</b>	Smart urban IT strategies Ltd. cooperation
<b>IAMSIL</b>	International Aquatic and Marine Science Information Library Center.
<b>NAFRI</b>	National Fisheries Research institute.
<b>UBC</b>	Union of Baltic Cities.
<b>ICLD</b>	International Centre for Local Democracy.
<b>LVYN</b>	Lake Victoria Youth Network.
<b>LVTTF</b>	Lake Victoria Tourism Task Force.
<b>SDG</b>	Sustainable Development Goals.
<b>NGO</b>	Non-Governmental Organization.
<b>PSP</b>	Private Sector Partnership
<b>SIDA</b>	Swedish International Development Cooperation Agency
<b>LVEMP</b>	Lake Victoria Environment Management program
<b>NEMA</b>	National environment management Authority
<b>UNEP</b>	United Nations Environment

## TENTATIVE PROGRAM FOR LVRLAC ANNUAL GENERAL MEETING SCHEDULED FOR 10TH/14TH JUNE 2019 KISUMU CITY - KENYA

DATE	ACTIVITY	VENUE	RESPONSIBILITY CENTRE	REQUIREMENTS	SPECIAL/ CHIEF GUEST
<b>Mon</b> <b>10/6/2019</b>	-Arrival of delegates. -Registration and accreditation.(To be done throughout the AGA period)	Uhuru Park opposite Kisumu City hall.	Regional secretariat	A tent for 100 people, and 4 tables.	NIL
<b>TUES</b> <b>11/6/2019</b>	-Clean-up activity in selected places around Kisumu City. -Tree planting along selected streets in Kisumu City. -A guided walk around selected places in Kisumu Town (Evening) -Evening get	Around Kisumu City.	Office of the City manager Kisumu.	Garbage, trucks, spade, pick axe, simple hand gloves, tree seedlings (3 feet), venue for evening get together, soft drinks and music.	Kisumu city manager.

<p><b>WED.</b> <b>12/6/2019</b></p>	<p>-Min workshop day on themes:</p> <ol style="list-style-type: none"> <li>1. Prospects for unlocking the tourist potential in the lake region.</li> <li>2. Youth &amp; environment the case for Lake Region.</li> <li>3. Strategies, initiatives, and actions to save the lake &amp; the general environment the case for Kisumu city. (Workshop to start at 9 am</li> </ol>	<p>New East View Hotel.</p>	<p>The Speaker Kisumu county assembly. The office of the director environment Kisumu cit. Regional secretariat.</p>	<p>Venue, facilitators / presenters, soft drinks.</p>	<p>Speaker Kisumu County Assembly.</p>
---	---	-----------------------------	---	---	--

<p><b>THUR.</b> <b>13/6/2019</b></p>	<p>drinks. Participants are AGA delegates and selected relevant stakeholders.</p>	<p>NIL</p>	<p>Hon. Saleh Okudo. MCA &amp; chair tourism.  Regional secretariat.  The office of the speaker Kisumu County assembly.</p>	<p>Entrance fees, 4 mini buses, transport fees, official booking at the tourist sites, identification of convergence points to flag off the tour  Soft drinks &amp; stationary.  Venue, entertainment group, food &amp; drinks</p>	<p>NIL LVRLAC Regional chairperson. HE the Governor Kisumu County, City manager – speaker Kisumu county assembly, chairperson Kisumu City board.</p>
<p>-Guided study tour of 4 tourist sites within and in the neighborhood of Kisumu city. -LVRLAC Regional executive committee meeting. -Kisumu County Assembly, Speakers welcome dinner.</p>	<p>NIL</p>	<p>Hon. Saleh Okudo. MCA &amp; chair tourism.  Regional secretariat.  The office of the speaker Kisumu County assembly.</p>	<p>Entrance fees, 4 mini buses, transport fees, official booking at the tourist sites, identification of convergence points to flag off the tour  Soft drinks &amp; stationary.  Venue, entertainment group, food &amp; drinks</p>	<p>Entrance fees, 4 mini buses, transport fees, official booking at the tourist sites, identification of convergence points to flag off the tour  Soft drinks &amp; stationary.  Venue, entertainment group, food &amp; drinks</p>	<p>NIL LVRLAC Regional chairperson. HE the Governor Kisumu County, City manager – speaker Kisumu county assembly, chairperson Kisumu City board.</p>



<p><b>FRI.</b> <b>14/6/2019</b></p>	<p>-LVRLAC Annual general assembly meeting. ( the detailed program for the AGA shall be issues to delegates on the AGA day by the regional secretariat)</p>	<p>Kisumu Imperiala sanctuary camping ground.</p>	<p>LVRLAC regional secretariat.</p>	<p>Breakfast, water, and lunch, entertainment, tents for the venue, chairs, decorations, ushers,</p>	<p>HE the Governor of Kisumu county - Prof. Anyanga Nyongo.</p>
---	---	---	-------------------------------------	--	---

## OVERVIEW



Chairperson LVRLAC Kenya Chapter receiving a flag to host LVRLAC AGA for 2019 Kisumu Kenya

Lake Victoria Region Local Authorities Cooperation (LVRLAC) Annual General Assembly (AGA) is a week-long event, dictated by LVRLAC constitution, organized annually on a chapter/country rotational basis. Organizing LVRLAC regional AGA, is a mandate of the regional secretariat in conjunction with the host Chapter and host local Authority. This year's AGA will be held from 10th – 14th June/ 2019 at Tom Mboya labour college in Kisumu City – Kenya.

It provides an interface of all LVRLAC key stakeholders to reflect on the organizations' activities, knowledge exchange, dialogue on pertinent Lake Victoria and the general environmental resource issues and to deliberate and endorse on the major LVRLAC policy issues to guide her operations in the ensuing financial year.

LVRLAC AGA – 2019 therefore, borrows from the successes and lessons from LVRLAC AGA – 2018, and it is intrinsically linked to reposition the lake region to meeting the sustainable development goals (SDGs), and to achieving LVRLAC vision of:

***“A well networked Local Authorities with a prosperous population in an ecologically stable Lake Victoria region.”***

This year's AGA is organized under the theme.

***“Youth and culture as cornerstone in the conservation of Lake Victoria and the general environment around the lake.”***

It's hoped that the key note address and the delegate's deliberations will focus much on this theme and give a way forward.

## MESSAGE FROM THE REGIONAL CHAIRPERSON



- The chief guest,
- The secretary General Lake Victoria Basin commission,
- Representative from ICLEI and other relevant organization to LVRLAC,
- The hon. Speaker of Kisumu Country Assembly,
- Hon. Vice chairpersons of LVRLAC,
- The Secretary General LVRLAC,
- Distinguished guests,
- Fellow delegates,
- Ladies and gentlemen.

On behalf of the LVRLAC fraternity and the general populace that we serve in the Lake region,

allow me to take this very special opportunity to extend over utmost gratitude to our distinguished guest, the delegates to this year's Annual General Assembly. Our treasured partners: The ICLEI, UN- Habitat, UNEP, LVBC, SUITS, extra and friends of LVRLAC. It's my humble pleasure to welcome you once again to this gathering of top local leadership in the Lake Victoria Region. Your turn up to this Assembly is symbolic of our sustained resolve to work together as Local Government in the Lake region to manage, conserve and protect the Lake, its resource and the General environment within the Lake region. Our present benefits and more importantly that of the future generations.

I would like to thank my colleagues the chairpersons of the chapters, their executive, regional and chapter secretariats and all of you for maintaining love and commitment for LVRLAC, without which we wouldn't be here.

On a particular note, I wish to register my appreciation to our new Secretary General for his overwhelming performance of LVRLAC duties with

utmost resilience amidst challenges from all corners. You have really been spot-on; on all issues. please keep it up.

Specifically, I wish to point out on specific issues on which I implore you to think strategically and make resolve in this General Assembly. They are:

- a. Regular and active participation in all LVRLAC activities without leaving communities behind.
- b. Bringing on board the private sector and their respective organizations to ensure that LVRLAC taps into their respective corporate social responsibility strategies and resources.
- c. As a strategy, in all LVRLAC meetings at all levels, let's make simple resolutions/ declarations which are implementable and achievable (one by one makes a bundle. Let's think big. Start small and start immediately.)
- d. At whatever cost, LVRLAC should as a priority bring on board youth in whatever we do given their significance, numbers and potential in our communities.
- e. As local authorities we should enact legislation at our level in form of bye – laws and ordinances which are pro Lake Victoria, Rivers, wetlands and the general environment within the lake catchment area.
- f. Partnerships. Networking and collaboration at all levels and synergizing best practices, is the way to go.
- g. Our active participation at local and international relevant meetings, conferences and activities should be taken seriously.
- h. Our close working relationship with the East African Community secretariat, relevant UN agencies and research institutions, will not only enhance our local and international credibility and visibility at all levels but shall go a long way to help us make informed policies based on research findings.

- i. We should not forget furthering efforts and fulfilling the activities as elaborated in our strategic plan. (which can now be accessed online)

As I conclude, my special thanks go to Kenya Chapter for hosting this AGA amidst challenges. We are grateful to the honorable Speaker of Kisumu County Assembly, the City manager and the entire city board of Kisumu, Ms. Prisca Auma Misearch and Ms. Sally Okuda with the AGA organizing team of ten members of Kisumu County Assembly. For sure, without your quick intervention, commitment and some resource allocation and guidance to the regional secretariat maybe this AGA wouldn't happen. Please keep it up.

I am confident that with mentoring of the executive committee, help from the secretariat and the collective support of our membership, LVRLAAC will grow from strength to strength during our leadership.

My strategic focus will be on consolidating the gains and activities previously achieved and sharing experiences learnt to forge a way forward. I will use a multi-prolonged approach towards accomplishing our strategic goals through active engagement with our communities and our partners, whose missions are in line with ours to protect our Lake and the general environment from avoidable activities that threaten our existence.

*Asante sana.*

*Kayanja Vincent Depaul,*

*Chairperson LVRLAC – Region.*

## MESSAGE FROM THE CHAIRPERSON: LVRLAC – KENYA CHAPTER



“I would wish to compliment all the chapters and the communities around Lake Victoria basin that form the main pillar of LVRLAC for the endless enthusiasm towards the association’s activities.

The vision of LVRLAC has been so loud in order to sustain good use of the lake and the basin. Other than the above two objectives, the LVRLAC has endeavored to develop several other projects aligned to improved lives of the vulnerable around the Lake Victoria basin! We as a Kenyan chapter appreciate the Association

for the effort.

It’s my sincere gratitude that the association is meeting all its programmed activities as it opens new windows still for the greater people of the lake region.

We are appealing for more partners to join the association in order to jointly handle environmental challenges bedeviling our communities and ultimately meet the vision of the association.

I would wish to tell the delegates that the fruits of LVRLAC have been so enormous and ask all of us to be part of it. I now wish to welcome all of you to Kisumu (Kenyan Chapter), feel at home brothers and sisters as you enjoy the hospitality of Kisumu, our beautiful city as we all gear towards the AGA 2019/ 2020.

*Thank you.*

*Richard Ogindo*

*Chairman LVRLAC – Kenya Chapter.*

## MESSAGE FROM THE CHAIRPERSON LVRLAC TANZANIA CHAPTER



Dear delegates to the AGA, I take this opportunity to thank God for having us converge as fraternity once again. I want to welcome you to this 18th AGA and thank the leadership in Kisumu and the Kenya chapter for hosting this year's assembly. LVRLAC has undergone a lot of challenges which are part of growth. I therefore want to commend the EXCOMS and the secretariat team for the dedication to our roles amidst all the challenges.

As we once again converge to deliberate on issues to do with our shared resource Lake Victoria and our fraternity, I urge you members to always implement the agreed upon resolutions as a means of

realizing our vision and mission and towards sustainable utilization of the Lake Victoria Resources and further attainment of sustainable development in the Lake Victoria Region.

I want to thank our partners in development who have facilitated LVRLAC to achieve her mandate and most of all the member local authorities and counties for the continued interest in the organization and also appreciating the challenges within the Lake basin which are affecting our communities.

Lastly, I would like to commend the LVRLAC Secretariat where despite the financial challenges they have stayed strong and committed towards realizing the organizations vision and mission. This is truly encouraging.

I wish you fruitful deliberations and pray that the Almighty God grants us all journey mercies back home.

***Hon William Gumbo***

***Mayor of Musoma Municipal Council  
& LVRLAC Chairman - Tanzania  
Chapter.***

# LVRLAC ESTABLISHMENT AND STRUCTURE.

## 1. Introduction.

LVRLAC was founded in 1997 by major Cities and Municipalities within Lake Vitoria sub-region, with an overall objective of mobilizing and facilitating member local Authorities in Lake Victoria basin and its catchment area to work towards a coordinated and sustained utilization of this water resource, for the benefit and harmonization of the co-existence of the local communities. Since Rivers, wetlands, and the general environment within the lake catchment area naturally have a symbiotic relationship in their existence, they are always considered equally important in all LVRLAC interventions as a strategy. The riparian communities in the Lake region are always put at the forefront in the execution of all LVRLAC activities. The network has since establishment registered a commendable growth with a current membership of 135 member Local Authorities (mainly urban), across the 3 countries namely: Kenya, Tanzania and Uganda with prospective membership from Rwanda and Burundi.

## 2. Lake Victoria - The Resource.

Lake Victoria resource is trans-boundary and found in the East African Sub-region. It is the world's second largest fresh water body and Africa's largest water body. It is therefore a resource of monumental political, economic, biological and environmental significance locally and internationally. The Lake covers 68,870 square Kms, stretching across three countries shared in the percentage coverage as: Tanzania (49%), Uganda (45%) and Kenya (6 %). Its basin of 184,200 square Kms extends beyond the above three countries to include Rwanda and Burundi. It is the source of livelihood for an estimated 35 million people. The Lake is Africa Continent's single most important source of inland fishery production and each year an estimated 500,000 tons of fish are harvested from its waters providing food and livelihood for about half a million people.



The gross economic product of the lake catchment is estimated at between US\$3-4 billion annually. All in all, close to a third of the combined population of Kenya, Tanzania and Uganda is dependent on the lake catchment for livelihood. Apart from the larger cities of: Kampala capital city (Uganda), Kisumu city (Kenya) and Mwanza city (Tanzania), much of the Lake catchment economy is agricultural with a number of cash crops (including exports of fish) and a high level of subsistence fishing and agriculture. As a result, the quality of the physical environment is a fundamental factor in maintaining and increasing the living standards of the growing population in the Lake basin. Against this background, any deterioration in the productivity of the lake region does automatically have a very significant impact on the economic fortunes of the entire region for the current and future generation.

### **3. Current Status of Lake Victoria**

Increasingly, Lake Victoria is getting threatened mainly due to human activities which includes but not limited to; overfishing, poor fishing methods, deforestation around the lake, sand mining, human settlement, and lake pollution with solid waste, medical waste, and hazardous industrial waste all of which affect the eco system. Therefore, if nothing is done this great resource will be pushed to extinction. So, LVRLAC was established to mitigate some of these challenges in a concerted manner and for sure it has done and continues to do some work.

### **4. LVRLAC Vision**

“A well networked Local Authorities with a prosperous population in an ecologically stable Lake Victoria region.”

### **5. LVRLAC Mission**

To facilitate member Local Authorities through building of strategic partnerships, harmonization of policies and promotion of knowledge on best practices that enhance their capacities to provide living standards, services and opportunities for sustainable development in lake victoria region

## 6. LVRLAC CORE Values

In working towards the attainment of our vision and mission, LVRLAC is guided by the following core values;

- a. **Stakeholder participation and grassroots accountability:** In all our work we strive to promote Local Authorities that create opportunities for meaningful participation of local communities as key stakeholders in shaping actions, decisions and initiatives that have a bearing on their wellbeing. This includes creating the necessary environment for primary stakeholders to be informed, to question and influence Local Authorities actions in pursuance of their best interests.
- b. **Respect for diversity and harmonious co-existence:** We recognize that despite differences in social, economic, political, ethnic, cultural and religious backgrounds and perspectives, we all have inalienable rights to our shared environment and its resources and can only peacefully co-exist and develop when Local Authorities promote mutual respect and accommodation at all levels.
- c. **Transparency and good governance:** In all our actions, decisions and dealings with others we strive to maintain and promote the highest standard of openness, fairness, cost effectiveness and efficiency and avoid all manner of corrupt and compromised practices.
- d. **Environmental sensitivity:** In all our day-to-day endeavors, we seek to maintain and promote a safe and healthy environment and to protect the environmental resources within our reach.
- e. **Social justice and Gender equity:** We value the contributions of both men and women in promoting sustainable development. In our work, we provide equal opportunities for both men and women, and where necessary, in recognition of the historical exclusion of women from developmental opportunities, we pursue affirmative action.
- f. **Knowledge and opinion values:** We identify and respect knowledge as the basic foundation for informed opinion on choices, practices and beliefs.

g. **Partnerships, networks and collaboration.** This is a priority that enables LVRLAC to implement her programs either single handedly or in conjunction with her relevant partners. This core value is enhanced through active participation of LVRLAC in local and international fora and through enactment of formal memorandums of understanding spelling out of mutual areas of interest with willing partners.

7. **LVRLAC strategic plan – (2018-2023)** this was last year endorsed during LVRLAC AGA in Mukono Uganda. And the key areas in this plan are:

a. **Strategic Goal:** LVRLAC’s strategic goal for the period

2018-2023 is

“An improved environment status and social - economic well-being of the riparian communities in the Lake Victoria region.

b. **Strategic thematic areas:** LVRLAC strategic thematic areas are;

i. Water, sanitation, public health, Fisheries, Environment and climate change

ii. Production, Economic Development, smart economies and micro industries.

iii. Social Development

iv. Gender, Youth and Children

v. Good governance

c. **Strategic Objectives:** In order to effectively contribute to the attainment of the above goal, LVRLAC will pursue its five

major objectives namely;

- i. To ensure sustainable utilization of Lake Victoria resource and its ecosystem.
- ii. To strengthen governance systems and structures in LVRLAC secretariats and her member Local Authorities
- iii. To promote increased access to social services among the communities in the Lake Victoria region
- iv. To Promote and coordinate gender, youth and children development programs in LVRLAC member local authorities
- v. To maximize production and enhance local economic development in LVRLAC member Local Authorities Lake Victoria Region and its significance.

## **8. Resources for implementation of LVRLAC Activities**

As provided in the LVRLAC constitution, source of funding for LVRLAC activities are;

- a) Collection from annual membership fees
- b) Membership registration fees
- c) Balances from participation fees in LVRLAC activities
- d) Donations /grants (Financially and in kind)
- e) Voluntary services
- f) Collaborative, partnerships arrangements (MOU in areas of mutual interest) with relevant; institutions, agencies, departments and NGOs both in government and private sector
- g) Project funding from donor agencies both locally and internationally
9. LVRLAC's distinctive competence

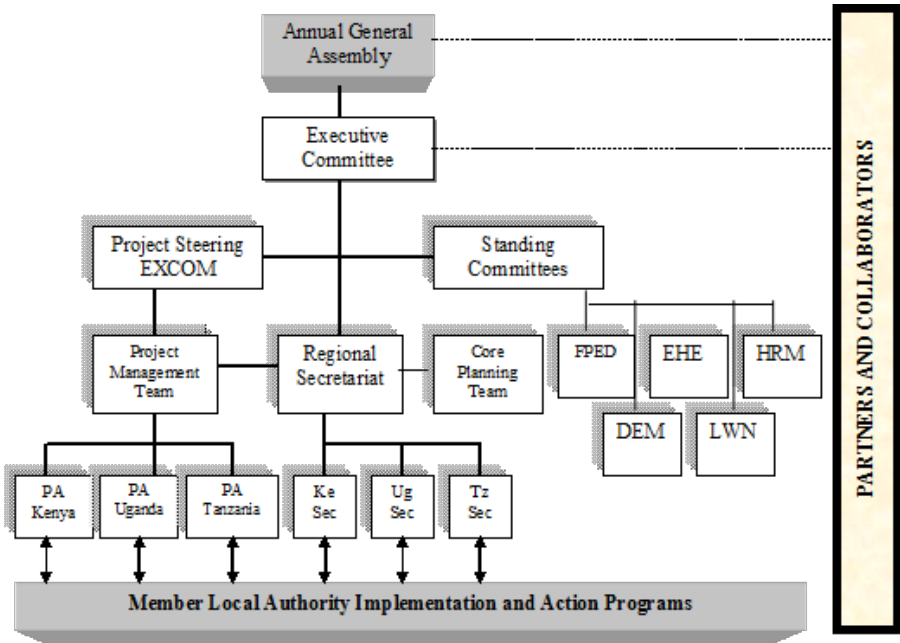
The broad thrust of LVRLAC's current direction seeks to build on and consolidate the organizations competences that have been accumulated over the last 20 years of its existence. LVRLAC's core competence is in facilitating and building the capacity of Local Authorities to undertake sustainable development initiatives. In addition, LVRLAC has also developed competencies in the area of learning and knowledge management through undertaking pilot model projects especially in the area of environmental protection and conservation. Additionally, LVRLAC has over the years gained significant competences in network and partnership building through wide-ranging engagements with governmental, inter-governmental and non-governmental actors at various levels.

## **10. LVRLAC's comparative advantage**

LVRLACC has comparative developmental advantage with its strongest advantage lying in its hybrid institutional character. The organization is registered and operates as a non-governmental body which is constituted by governmental actors (local authorities, cities, municipalities and towns). It thus blends the operational flexibility of a non-governmental agency with the far reaching mandate and legitimacy of Local Governments to offer a great potential for wide-grassroots outreach and impact. Above all, given the statutory /legislative and administrative mechanisms at the disposal of her member local authorities, LVRLAC has great potential to; enlist policy changes, enact byelaws/ordinances at local level in pursuance of LVRLAC mandate and more effective enforcement of standards and policies at the local level within the region.

LVRLAC has ambitious plans to translate its current gains to sustained high-level growth and sustainable development for the region with the support of Partner Local Authorities/Counties and Development

## 11. LVRLAC Organogram (organizational structure)



## 12. Governance and Management of LVRLAC

i) The Network Governance structure has the Annual General Assembly (AGA) as the supreme policy making organ of the organization. The AGA is composed of four representatives from subscribing member Local Authorities. The AGA is held once in a year and it's rotational from one country to another. Below the AGA is the regional Executive committee (EXCOM) and this is constituted by the regional chair, the Secretary General, Deputy Secretary General in the three Chapters, Chapter chairpersons, project officers and three representatives from each of the chapters. Excom meetings are held as regularly as need arises and also on a rotational country basis, her role is to regularly monitor the operations of the organization and supervise the regional secretariat.

Below the regional Excom, are the chapter Annual General Assemblies which are held in their respective Chapters/countries once in a year and they are constituted by four representatives each of chapter member Local Authorities. The Chapter Excom is the supreme policy making organs at a chapter level below which is the chapter Excom constituted as above but chapter level.

The Executive Committees Excom at both regional and chapter levels are supported by five Standing Committees that focus on specific aspects of the organization's operations.

These include;

- a) Core planning committee (at region and at chapter level)
  - b) Finance, Planning and Economic Development standing committee;
  - c) Environment, Health and Education standing committee;
  - d) Human Resource Management standing committee;
  - e) Social services standing committee;
  - f) Gender, youth, children and PWDs committee.
- ii) The Management function of the Network – this is vested to the Regional Secretariat headed by the Secretary General as the overall technical head of the network and the regional offices are currently based in Entebbe Municipal headquarters –Uganda. Below which, are the chapter sub secretariats which are country-based and are located as; for Uganda chapter- Kampala City office - Makindye, for Kenya Chapter – (should be Kisumu City head office), for Tanzania Chapter – Mwanza City Head office. The Chapter secretariats are headed by Deputy Secretary Generals in the respective chapters.
- iii) The Management team is further supported by the Core Planning committee at both regional and chapter levels. This committee is temporary and it's made of 12 technical officers from LVRLAC membership. It is responsible for providing technical backstopping to the regional and Chapter secretariats. The committee also spearheads LVRLAC strategic planning

processes and supports internal policy development.

iv) The LVRLAC Project Steering Committee; this provides guidance and oversight on the implementation of the project. The Project Steering Committee (PSC) comprises of the Chairman of regional EXCOM and the 2 Vice Chairpersons, the Secretary General and the 3 Deputy Secretary Generals and a woman representative.

v) The technical management responsibility of the projects; this is vested in professional team headed by the Secretary General and comprising of; the Regional Programme Officer, regional project officer, the 3 chapter project assistants, regional Accountant, information/communication officer and any other technical officer recruited on contract basis as may be by the dictates of the project at hand. At the member Local Authority level, focal persons are appointed to coordinate LVRLAC activities.

### **LVRLAC REGIONAL EXECUTIVE COMMITTEE MEMBERSHIP.**

NO	NAME	LOCAL AUTHORITY & DESIGNATION	COUNTY-CHAPTER	LAVRLAC TITLE	TEL
1	Mr. Kayanja Vincent Depaul.	Mayor Entebbe Municipal Council	Uganda Chapter	Regional chairperson	+256753489466
2	Hon. Ogindo Richard.	Majority leader Homabay- County	Kenya Chapter	1st Deputy Regional Chairperson	+254745424845
3	Capt (RTD). Gumbo P. William.	Mayor Musoma Municipal Council.	Tanzania Chapter.	2nd Deputy Regional Chairperson	+255759955122
4	Mr. Semyalo Ismail Mulambuzi.	Mukono Municipal Council.	Uganda Chapter.	Secretary General.	+256704743034



5	Mr. Duro George	Chairperson – finance Migori County.	Kenya Chapter.	Member	+254722625988
6	Mr. Nsubuga Hamidu Kizito.	Chairperson Nansana Division Local Government.	Uganda Chapter	Member	+256772412100
7	Mr. Tom Onyango	Clerk Migori County Assembly.	Kenya Chapter.	Member	+254713556633
8	Mr. Emmanuel Marima Magesa	LVRLAC Focal person Geita Town Council.	Tanzania Chapter	Member	+255762339126
9	Mr. George Okual.	Kisumu County.	Kenya Chapter.	Member	+254722113087
10	Mr. Kakumba Paddy.	Town Clerk Katabi Town Council	Uganda Chapter	Member	+256772503070
11	Mr. Kibaba Kimoni.	City Director Mwanza County.	Tanzania Chapter.	Member	
12	Mr. John Kiasa.	Homabay County.	Kenya Chapter.	Member	+254722454730
13	Mr. Kakembo .M. Jamir.	Chairperson Mukono Central Division. LG.	Uganda Chapter.	Member	+256772613893
14	Hon. Mohabe Suzan.	Woman Rep. Migori County.	Kenya Chapter.	Member	+254727522123
15	Hon. Leonard Kiganga Bugomola.	Geita Town Council .LG.	Tanzania Chapter	Member	+2255756147177
16	Ms. Asimwe Medious.	Deputy Mayor Jinja Municipal Council.	U g a n d a Chapter	Member	+256701544065
17	Hon. Roy Samo	Kisumu County Assembly	Kenya Chapter.	Member	+254713227230

18	Ms. Kasowole Joy.	Committee clerk Jinja Municipal Council.	Uganda Chapter.	Member	
19	Mr. Patrick Karangwa.	District Executive Director – Msalala	Tanzania Chapter	Member	
20	Hon. Eric Kanachomu.	Tanzania		Member	

## SECRETARY GENERAL'S REPORT



**D**ear Hon delegates, partners and key stakeholders we are gathered here to review the extent of engagement that we have been involved in from the onset. I wish to register my sincere appreciation to the regional Chairperson and the entire Regional Executive for the guidance that they have given the secretariat and the trust they have in us. Further appreciations go to the Hon. Speaker of Kisumu County Assembly, Ms. Prisca Auma Misenari and Ms. Sally Okuda without their counsel and quick intervention this AGA maybe

would not have happened today. The Kisumu County Assembly organizing Committee, Kisumu City Manager, and Kisumu Director of environment are highly appreciated for all they have done to see this AGA a success.

The theme for this AGA is: *“Youth and culture as a cornerstone in the conservation of Lake Victoria and the General environment around it.”*

This theme was carefully designed to provoke debate, critical reflection and way forward on how the best cultural practices in the Lake Region could still be rekindled to further help and guide the sustainable utilization of our lake and the general environment. The theme further provokes similar debate on how the youth potential could be tapped I LVRLAC activities. Further debate is also needed in this AGA on how to unlock the tourism potential in the lake region to create employment for the surging youth unemployment in the Region. I trust that during general discussions in this Assembly, you will do justice on these matters.

*Proposed strategies for implementation of LVRLAC strategic plan 2018 – 2024.*

The strategic plan has to be implemented

in a decentralized manner in which:

- a. The regional secretariat handles major cross cut activities /projects and the chapter secretariats will be responsible for some activities which are smaller and could easily be handled at chapter level. This calls for active secretariat and regular meeting and planning by LVRLAC leadership at all levels.
- b. The regional secretariat should ensure that all LVRLAC partnership agreements have activities in areas which rhyme with our 5 year strategic plan so that, implementation of partnership agreement will by implication, implementing of LVRLAC strategic plan.
- c. There should be enhanced working relationship between LVRLAC secretariat and the two more relevant UN agencies ie UN – Habitat and UNEP. A lot has so far been shared and discussed with those 2 organizations about LVRLAC strategic plan and we have started preparing joint project documents/ proposals for funding.
- d. A strategy for a periodic joint review of the progress on the implementation of our strategic plan should be carried out. A selected

team should be identified to review the progress of the strategic plan implementation and give advice accordingly.

- e. We should enhance engagement with private sector organization and as LVRLAC at regional and chapter levels. To tap into their social cooperate responsibility and resources.

### **Achievements for the period under review.**

- Carried out on-spot physical assessment of chapter secretariat operations to identify key challenges and devise means to address them.
- In conjunction with ICLEI, held 3 days Eco – mobility workshop with participants drawn from Uganda, Kenya and Tanzania mainly member Local Authorities. The workshop was aimed at devising means of how to reduce traffic jam in our major cities and towns and hence to reduce vehicle carbon emission reduction.
- LAVRLAC fully participated and was effectively represented in the world conference on Urban Biodiversity in Cape Town South Africa, organized by ECLEI.

- The regional Excom was able to make an official visit to the East African Community secretariat for familiarization of secretariat operations and for visibility strategy for LVRLAC.

-Regional Executive committee meeting successfully held on a rotational basis per Chapter.

-Tanzania and Uganda chapters were able to hold their chapter Annual General Assembly meetings.

-LVRLAV Uganda chapter held a 2 days climate change workshop in Masaka Municipal Council, and made some declarations, one of which was to roll out all clusters through the entire chapter.

-LAVRLAC was effectively represented to the UN-Habitat and UNEP General Assembly meetings held at UNON office in Nairobi – Kenya and through this, LVRLAC visibility and networks enhanced.

-LVRLAC old vehicle (Terano type) was eventually disposed - off as resolved in the last AGA. It was sold at UGSH: 5m. But only 3m has so far paid to LVRLAC.

-LVRLAC delegations successfully visited the University of Yaunom

in South Korea to strengthen our partnership and recently in a similar manner, LVRLAC secretariat hosted a delegation of 2 professors from Yaunom University - Korea in which both visits, strengthening our partnership was enhanced.

-LVRLAC secured a fully paid up 5 year membership to an international research organization on water and environment. Based in United States of America from which LVRLAC shall benefit from research information in the relevant sectors and also submit projects for funding.

-A formal partnership agreement between LVRLAC and ECLEI has been signed from which, lobbying for project funding, LVRLAC visibility and invitations to fully funded international conferences, information sharing at Global level, are areas of focus in this partnership.

-Tree planting have been carried out at all major LVRLAC events.

-The regional secretariat has made visits and held meetings with relevant organization both public and private to enhance LVRLAC visibility, collaboration and network expansion, to explore opportunities of relevant programs. In this regard, we have established formal partnership

arrangement with: UNDP, GIZ, KOICA, JICA, USAID, NEMA-Uganda and NAFRI.

## Challenges.

-Nonpayment and late payment of annual subscription fees by LVRLAC member local Authorities.

-Lack of fully funded projects to enhance LVRLAC activities in the communities.

-Lack of a functional chapter secretariat for Kenya.

-Ever expanding demand from the community to LVRLAC for interventions on the sustainable utilization of the lake, rivers and wetlands in the lake region without similar capacity to address such demand.

-Lack of a committed research institution to enable LVRLAC quickly generate research based projects and programmes within her mandate.

-Lack of equipment such as vehicles, motorcycles, computers, water boxes, video cameras etc. to enable her quickly and properly coordinate the organization activities

-Rapid urbanization with all its short comings in the lake region which

causes changes in the urban face thus causing challenges of sustainability of LVRLAC activities.

-Enhanced networks and partnership with likeminded Government, Non-government agencies, universities, research institutions, locally and internationally, to join efforts and built synergies for implementation of LVRLAC strategic plan

## Way Forward

-Timely payment of annual membership subscription Local Authority to LVRLAC Secretariat.

-Securing project funding agencies for LVRLAC projects.

-Expanding LVRLAC partnership networks and collaborations to tap into the benefits that come with such networks.

-Continuous follow-ups on the implementation of existing partnership agreement.

-Continuous lobbying of funds from the donor agencies for implementation of LVRLAC 5 year strategic plan.

-Printing and continuous dissemination of 5 year strategic plan.

-Securing a new vehicle for LVRLAC

regional secretariat.

-Ensuring effective operation of all LVRLAC Secretariats.

-Regular meetings for regional and chapter leadership.

-Vigorous chapter activities in member Local Authorities.

-Identifying and appointment LVRLAC focal persons to coordinate LVRLAC activities in Local Authorities.

**Conclusion** The achievements mentioned above would have been more enormous and more impactful on the ground if LVRLACC had potential funders for bigger projects. For sure, LVRLACC is still a very relevant network as it has a comparative strength over any other organization for the same cause in the lake regions since it is the first and only platform of the nature and composition in the sub region.

***Mr. Semyalo Ismail Mulambuzi***  
***Secretary General LVRLAC***

### **List of LVRLAC member Local Authority Uganda chapter.**

1. Kampala Capital City Authority.
2. Nakawa Municipal Division Council.
3. Kampala Central Division Council.
4. Kira Municipal Council.
5. Nansana Division Council.
6. Kasangati Town Council.
7. Kyengeru – Nsangi Town Council.
8. Busukuma Municipal Division Council
9. Mukono District Council.
10. Mukono Central Division Council.
11. Masaka District Council.
12. Nyendo - Senyange municipal Division.
13. Bukakata Sub-county.
14. Bukulula Sub-county.
15. Kalungu District Council.
16. Mbarara District Council.
17. Kakoba Municipal Division Council.
18. Kakika Municipal Division

- Council.
19. Mbarara Municipal council.
  20. Kaliisizo Town Council.
  21. Jinja Municipal Council.
  22. Njeru Town council.
  23. Kajjansi town council.
  24. Kakiri Town Council.
  25. Mukono District Council.
  26. Mukono Central Division Council.
  27. Masaka District Council.
  28. Nyendo - Senyange municipal Division.
  29. Bukakata Sub-county.
  30. Bukulula Sub-county.
  31. Kalungu District Council.
  32. Mbarara District Council.
  33. Kakoba Municipal Division Council.
  34. Kakika Municipal Division Council.
  35. Mbarara Municipal council.
  36. Kaliisizo Town Council.
  37. Jinja Municipal Council.
  38. Njeru Town council.
  39. Lugazi Municipality.
  40. Iganga District Council.
  41. Buikwe District Council.
  42. Njeru Municipal Council.
  43. Rubaga Municipal Division council.
  44. Kawempe Municipal Division Council.
  45. Makindye Ssaabagabo Municipal Council.
  46. Nansana Municipal council.
  47. Wakiso District Council.
  48. Entebbe Municipal Council.
  49. Gombe Municipal Division Council.
  50. Kasanje Town Council
  51. Masuulita Town Council.
  52. Namayumba Town Council.
  53. Mukono municipal Council.
  54. Goma Division Council.
  55. Masaka Municipal Council.



56. Kimanya – Kyabakuza Division Council.
57. Mukungwe sub-county.
58. Kyanamukaaka sub-county.
59. Lukaya Town council.
60. Nyamitanga municipal Division Council.
47. Biharwe Municipal Division Council.
61. Lyantonde Town council.
62. Kyotera District Council.
63. Jinja District Council.
64. Walukuba Masese Div Council.
65. Jinja Central Division Council.
66. Bugembe Town Council.
67. Kakira Municipal Council.
68. Mpumudde Division Council.
69. Magamaga Town Council.
70. Iganga Central Div. Council.
71. Buikwe Town Council.
72. Mayuge District Council.
73. Mayuge Town Council.
74. Bugiri Municipal Council
75. Bugiri Eastern Div. Council.
76. Bugiri Southern Div. Council.
77. Busia Municipal Council.
78. Busia Eastern Div. Council.
79. Busia District Council.
80. Malaba Town Council.
81. Iganga Northern Div. Council.
82. Majanji Sub County Council.
83. Busia Western Div. Council.
84. Lumino Sub county Council.
85. Namayingo District Council.
86. Namayingo Subcounty Council.
87. Namayingo Town Council.
88. Tororo District Council.
89. Tororo Municipal Council.
90. Tororo Eastern Division Council.
91. Tororo Western Division.
92. Nakifuma Town Council.
93. Kasawo Town Council.
94. Nkokonjeru Town Coucil.

- |                                  |                                 |
|----------------------------------|---------------------------------|
| 95. Katosi Town Council.         | 107. Entebbe Division B Council |
| 96. Busembatya Town Council.     | 108. Buvuma District Council    |
| 97. Kasanje Town Council.        | 109. Buvuma Town Council        |
| 98. Wakiso Town Council.         | 110. Kalangala District Council |
| 99. Namayingo Subcounty Council. | 111. Kalangala Town Council     |
| 100. Namayingo Town Council.     | 112. Najjembe Division Council  |
| 101. Mpigi District Council.     | 113. Lugazi Central Division    |
| 102. Mpigi District Council.     | 114. Njeru Central Division     |
| 103. Kammengo Town Council.      | 115. Njeru Municipal Council    |
| 104. Buwama Town Council.        | 116. Wakisi Division Council    |
| 105. Mutukula Town Council.      | 117. Kawoolo Division           |
| 106. Entebbe Division A Council  | 118. Busukuma Division Council  |

### **Tanzania Chapter LVRLAC Member Local Authorities.**

- |                                 |                               |
|---------------------------------|-------------------------------|
| 1. Mwanza City Council.         | 8. Bariadi Town Council.      |
| 2. Ukerewe District Council.    | 9. Msalala District Council.  |
| 3. Sengerema Town Council.      | 10. Itilima District Council. |
| 4. Kwimba District Council.     | 11. Busega District Council.  |
| 5. Misungwi District Council.   | 12. Geita District Council.   |
| 6. Shinyanga municipal Council. | 13. Geital Town Council.      |
| 7. Kishapu Municipal Council    | 14. Buchosa District Council. |

- |     |                                |     |                              |
|-----|--------------------------------|-----|------------------------------|
| 15. | Chato District Council.        | 26. | Bukoba Municipal Council.    |
| 16. | Bukombe District Council.      | 27. | Muleba District Council.     |
| 17. | Mbogwe District Council.       | 28. | Biharamulo District Council. |
| 18. | Nyangw’hwale District Council. | 29. | Magu District Council.       |
| 19. | Musoma Municipal Council.      | 30. | Sengerema District Council.  |
| 20. | Tarime Town Council.           | 31. | Illemela Municipal Council   |
| 21. | Bunda District Council.        | 32. | Missenyi District Council.   |
| 22. | Serengeti District Council.    | 33. | Ngara District Council.      |
| 23. | Rorya District Council.        | 34. | Karagwe District Council.    |
| 24. | Butiama District Council.      | 35. | Kyera District Council.      |
| 25. | Bukoba Municipal Council.      |     |                              |

**Kenya Chapter LVRLAC  
Member Local Authorities.**

- |    |                 |     |                  |
|----|-----------------|-----|------------------|
| 1. | Kisumu County.  | 8.  | Siaya County.    |
| 2. | Nyamira County. | 9.  | Busia County.    |
| 3. | Vihiga county.  | 10. | Bungoma County.  |
| 4. | Bomet County.   | 11. | Mogori County.   |
| 5. | Kisii County.   | 12. | Kericho County.  |
| 6. | Homabay County. | 13. | Eldorate County. |
| 7. | Nalok County.   |     |                  |



*New leadership Induction meeting at Masaka Municipal Hall 2018*



*Meeting of LVRLAC leadership at Entebbe Mayors' Board room*



*Giving out tree seedlings to Kyengera Town Coucil community*



*Induction Meeting at Nasana Municipal Council*





*Entertainment at Tororo Municipal Council before LVRLAC Uganda Chapter AGA 2018*



*After Bamboo Planting at River Aturutuku at Tororo Municipal Council before LVRLAC Uganda Chapter AGA 2018*







**SG LVRLAC introducing staff during LVRLAC AGA at Colline Hotel Mukono Uganda 2018**